

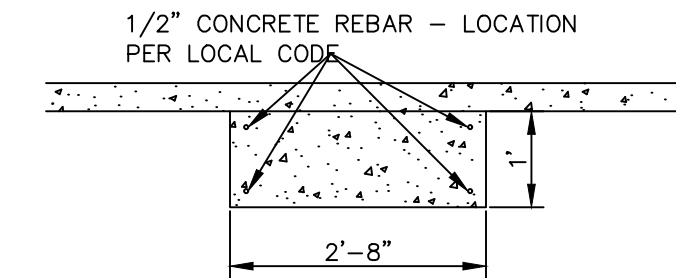
FOUNDATION PLAN

1/4" = 1'-0" (DIMENSIONS FRAMING TO FRAMING)

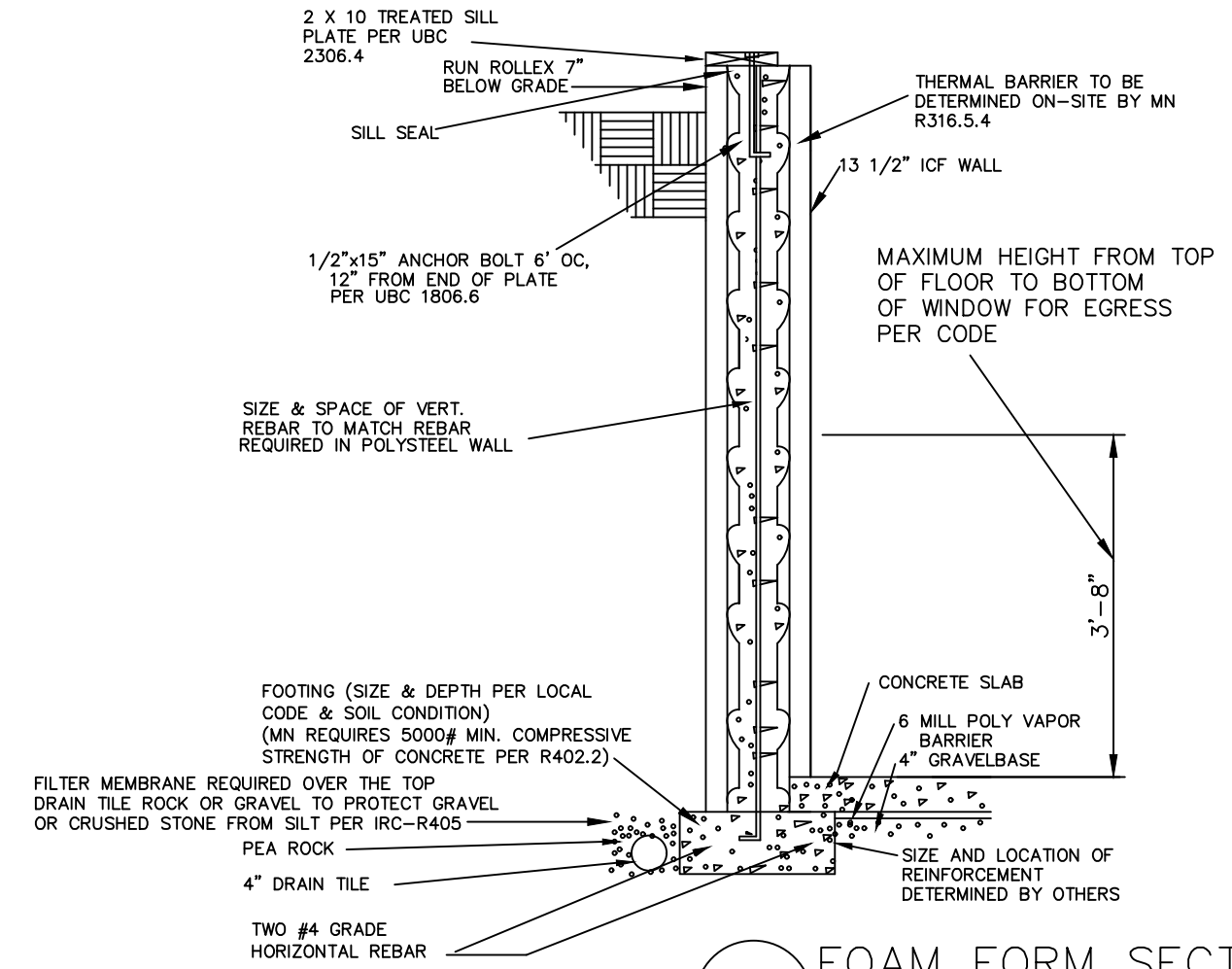
NOTE-
POST AND FOOTING SIZE MUST SUPPORT THE WEIGHT AT EACH JACKPOST LOCATION AS SHOWN (MN. REQUIRES 5000# MIN. COMPRESSIVE STRENGTH OF CONCRETE PER CODE)

****JACKPOSTS BASED ON A 9' HEIGHT BASEMENT**

NO.	LOWER LEVEL WINDOWS SHIPPED LOOSE	SQ. FT. LIGHT	SQ. FT. VENT
10	(4) VTC2-2842E 4'-8 1/8" X 3'-6 1/2"	12.38	11.86



OPT. CONTINUOUS PAD DETAIL
SCALE : 1/2" = 1'-0"



FOAM FORM SECTION
1/2" = 1'-0" (BY OTHERS)

FOUNDATION PLAN